

OPL-403

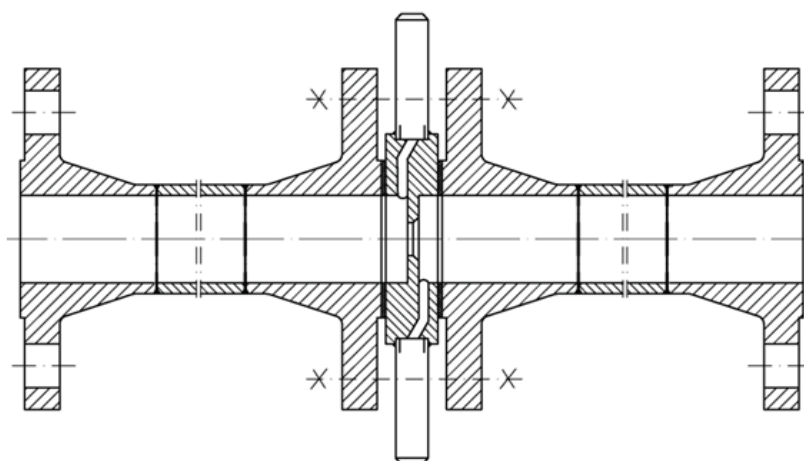
**METER RUN according to
EN ISO 5167:2005 for $D \geq 50$ mm
ASME-MFC-14M-2003 for $D < 50$ mm**

Detailed dimensional information is presented on the construction drawings issued by Alf-Sensor for approval.

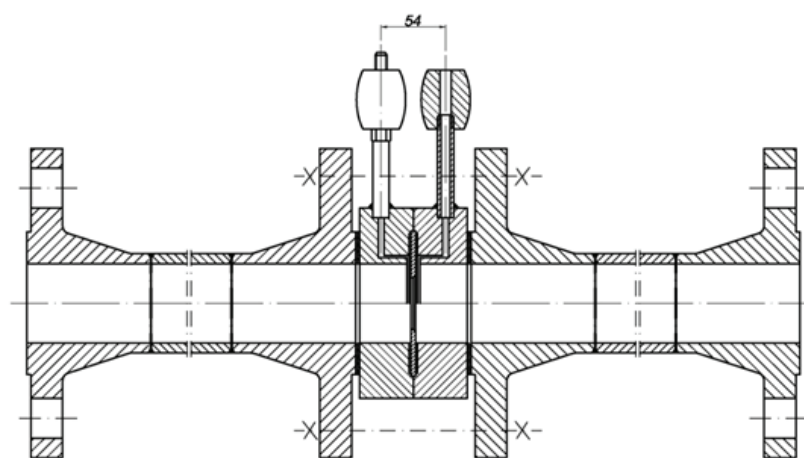
Meter runs are used in two cases:

1. Required measurement accuracy is better than 1%
2. DN of pipeline (or measuring section) $< 2''$.
In this case computations should be executed according to ASME-MFC-14M-2003 standard.

Note: Buyer shall submit calculation sheet of element, if done by him. Otherwise Alf-Sensor can make calculation on the base of FLOW QUESTIONNAIRE filled in by Buyer.



METER RUN, remote dP
transmitter connection



METER RUN, compact dP
transmitter connection

The standard lengths of Meter Run is 900mm for DN25 (NPS 1") and 1300 for DN40 (NPS 1,5")

Ordering Information

OPL- 403	A	B	C	D	E	F	G	H				
----------	---	---	---	---	---	---	---	---	--	--	--	--

A Nominal Pipe Diameter, DN or NPS	
	according to EN-DIN
	according to ASME

B Rating / Facing	
	according to EN-DIN
	according to ASME

C Internal Pipe Diameter, D	
24,70	24,70 mm for DN25
38,30	38,30 mm dla DN40

D Bore Diameter, d	
	specify in mm*

E Material	
1.4571	SS316Ti=1.4571
1.4404	SS316L = 1.4404

F Process Fluid State	
liquid	liquid
gas	gas
steam	steam

G Pressure Tap Connections	
weld pipe ½"	weld pipe ½"
½"NPT (F)	thread ½"NPT (F)
tube ½" for compression fitting	tube ½" for compression fitting
compact	compact (using Parker make HEFS3 manifold)

H Special Requirements	
	quality certificate
	heat treatment approval NACE
	Charpy V-notch impact testing
	bidirectional flow
	calculations acc to EN 13480
	additional examination acc to EN 13480
	3.2 certificate

* Bore diameter is calculated by Alf-Sensor on the base of FLOW QUESTIONNAIRE filled in by Buyer

Note: Internal diameter of pipeline could be changed after preparing strength calculations

Non-standard models available.

Ordering Example:

OPL-403-DN40-PN40/B1-40,2-30,02-1.4404-steam-compact

stands for: Meter run, Nominal pipe diameter DN40, Flange PN40 / facing B1 acc. EN 1092-1, Internal pipe diameter (Alf-Sensor standard) 38,30 mm, Bore 30,02 mm, Material 1.4404 = SS316L, Process fluid : steam, Compact connection to Parker make 3-valve manifold HEFS3, Special requirements: None, default is sharp edge orifice