

OPL-402

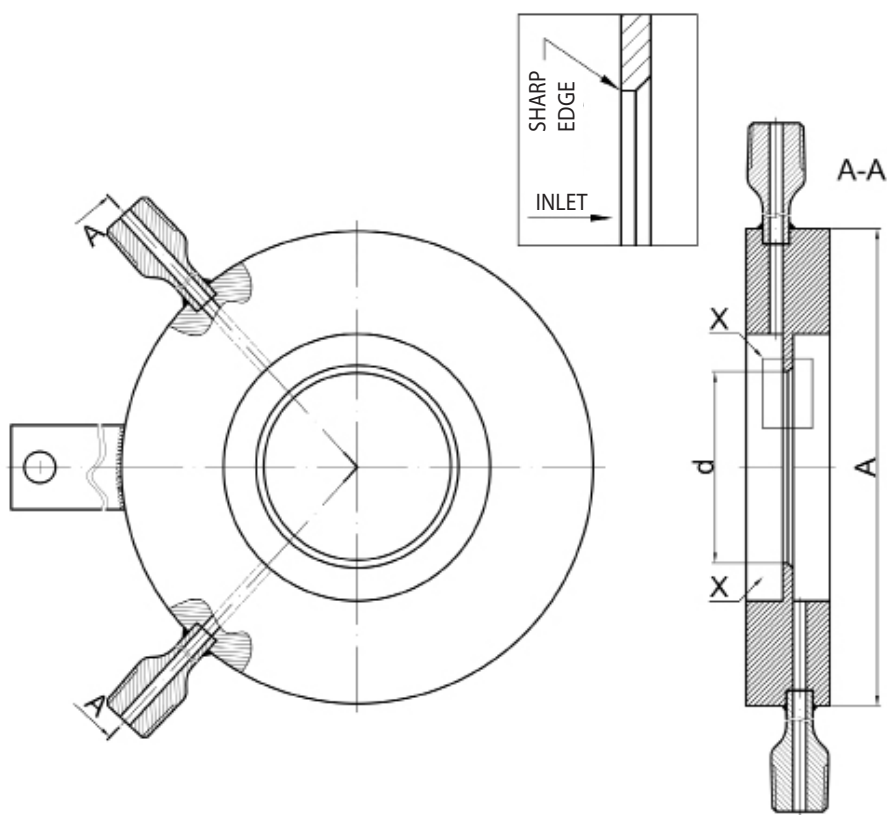
ORIFICE PLATES according to EN ISO 5167:2005 for $D \geq 50$ mm ASME-MFC-14M-2003 for $D < 50$ mm Corner Taps

Detailed information is shown on construction drawings provided by Buyer or prepared by Alf-Sensor.

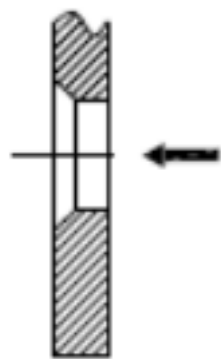
Basic dimensions required according to above mentioned standards are show on the sketch underneath:

Note: bore diameter shall be provided by Buyer, alternatively calculation may be done by Alf-Sensor using data provided (ref to OPL_FLOW QUESTIONNAIRE)

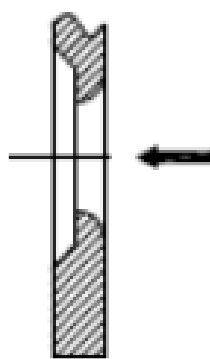
DETAIL X
SCALE 2:1



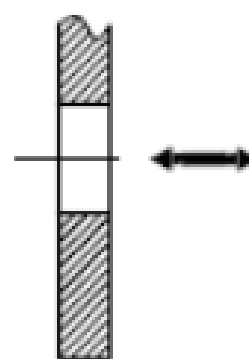
OPL- 402 Corner Taps Orifice Plates cntd.



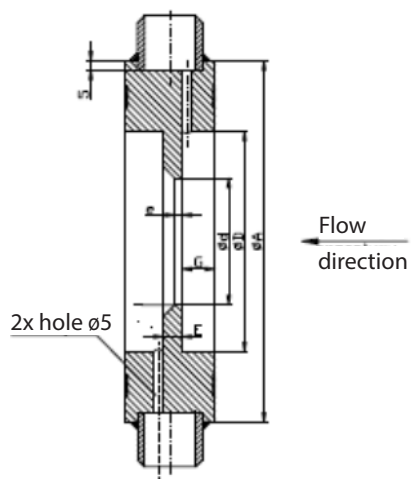
Sharp edge orifice plate concentric, basic design. Flange pressure taps. Installation between orifice flanges according to ASME B16.36 RF facing.



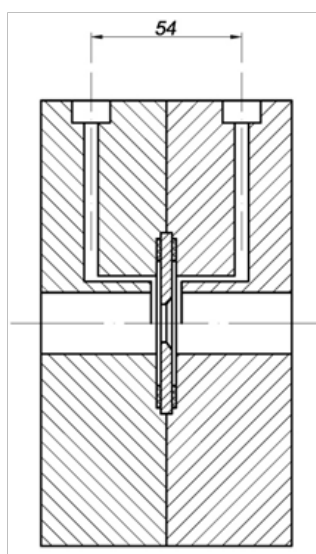
Quadrant bored orifice is applied to measure the flow of high viscosity fluids, when Reynolds Number is below 10 000. The radius „R” is a function of β ratio.



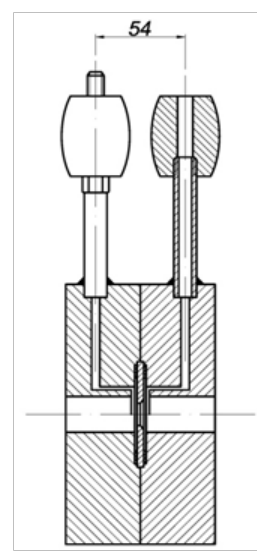
Sharp edge orifice plate concentric, basic design. Installation between flanges according to ASME B16.36 RF facing. For bidirectional flow.



Corner taps orifice plate.
Remote mounting of difference pressure transmitter.



Corner taps orifice plate.
Integral mounting of difference pressure transmitter.



Ordering Information

OPL- 402	A	B	C	D	E	F	G	H	I	J		
----------	---	---	---	---	---	---	---	---	---	---	--	--

A Corner Taps Version	
point	single point taps
chamber	annular chamber taps

B Nominal Pipe Diameter, DN or NPS	
	according to EN-DIN
	according to ASME

C Rating / Facing	
	according to EN-DIN
	according to ASME

D Internal Pipe Diameter, D	
	specify in mm

E External Diameter of Orifice , A	
	specify in mm

F Bore Diameter, d	
	specify in mm*

G Orifice Plate Material	
	specify material

H Process Fluid State	
liquid	liquid
gas	gas
steam	steam

I Pressure Tap Connections	
weld pipe 1/2"	weld pipe 1/2"
1/2"NPT (F)	thread 1/2"NPT (F)
tube 1/2" for compression fitting	tube 1/2" for compression fitting
compact	compact (using Parker make HEFS3 manifold)

J Special Requirements	
	quality certificate
	heat treatment approval NACE
	Charpy V-notch impact testing
	bidirectional flow
	sharp edge

* Bore diameter is calculated by Alf-Sensor on the base of FLOW QUESTIONNAIRE filled in by Buyer

Non-standard models available.

Ordering Example:

OPL-402-point-DN100-PN16/B1-98,2-163-50,12-1.4404-gas-1/2"NPT(F)-sharp edge

stands for: Orifice plate, corner taps pressure connections, Nominal pipe diameter DN100, Flange PN16 / facing B1 acc. to EN 1092-1, Internal pipe diam. 98,2 mm, Outsider orifice diam 163 mm, Orifice plate bore diam. 50,12 mm, Orifice plate material 1.4404 = SS316L, Fluid state: gas, Pressure taps connection: thread 1/2"NPT(F), Special requirement: Sharp edge orifice plate