

# OPL-408

## The ISA 1932 nozzle with carrier rings according to EN ISO 5167:2005 for $50 \leq D \leq 500$ mm Annular chamber

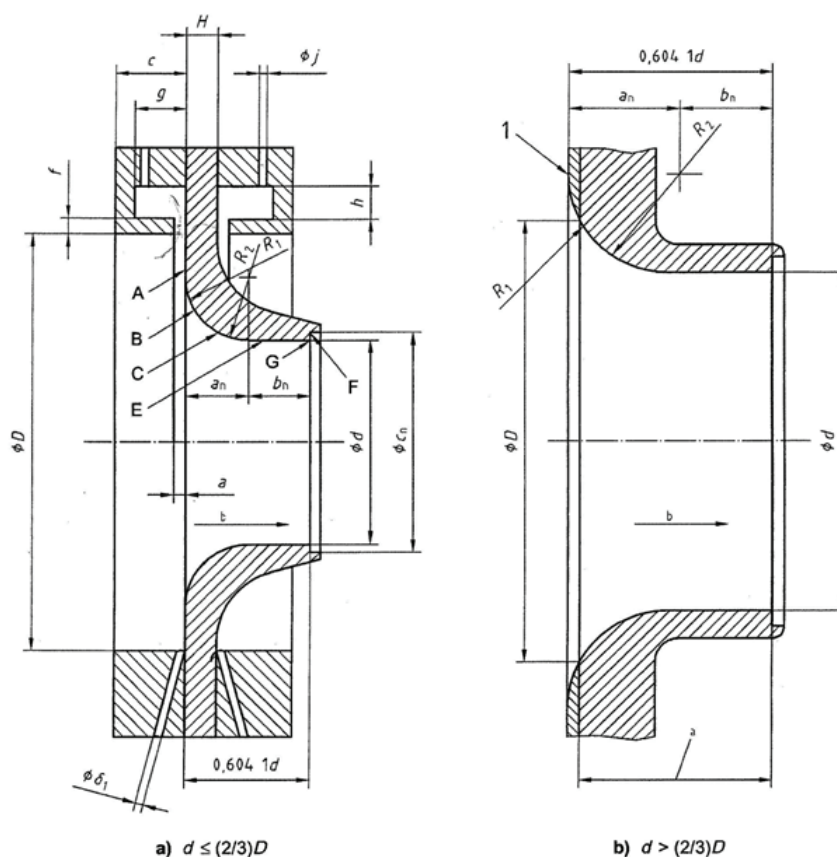
Application and general characteristic of difference pressure primary flow elements (orifice plates, Venturi tubes, long radius nozzles) are shown in data sheet dP FLOW ELEMENTS, General Information. Detail information is show on construction drawings provided by Buyer or prepared by Alf-Sensor.

The assembly consists of:

- The ISA 1932 nozzle manufactured
- Carrier rings, 2 ea
- Gaskets, 1 ea

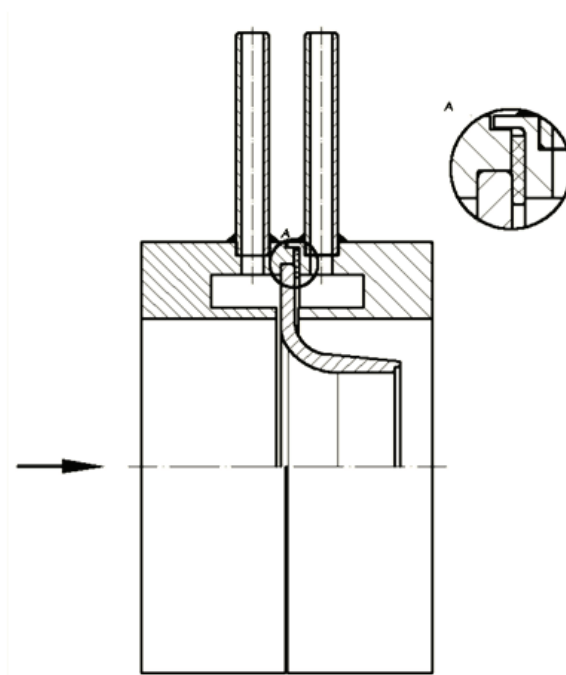
Basic dimensions required according to above mentioned standards are show on the sketch underneath:

Note: throat diameter shall be provided by Buyer, alternatively calculation may be done by Alf-Sensor using data provided (ref to OPL\_FLOW QUESTIONNAIRE).



The ISA 1932 nozzle according to EN-ISO 5167-3

## OPL-408 The ISA 1932 nozzle with carrier rings



The ISA 1932 nozzle with carrier rings.



## Ordering Information

OPL- 408	A	B	C	D	E	F	G	H	I	J		
----------	---	---	---	---	---	---	---	---	---	---	--	--

A Nominal Pipe Diameter, DN or NPS	
	according to EN-DIN
	according to ASME

B Rating / Facing	
	according to EN-DIN
	according to ASME

C Internal Pipe Diameter, D	
	specify in mm

D Throat Diameter, d	
	specify in mm*

E Nozzle Material	
	specify material

F Carrier ring Material	
	specify material

G Gasket Material	
	specify material

H Process Fluid State	
liquid	liquid
gas	gas
steam	steam

I Pressure Tap Connections	
tube 1/2" to welding	tube 1/2" to welding
1/2"NPT (F)	thread 1/2"NPT (F)
1/2" to male connector	tube 1/2" to male connector

J Special Requirements	
	additional examination
	type of weld joint (butt or fillet)

\* Throat diameter is calculated by Alf-Sensor on the base of FLOW QUESTIONNAIRE filled in by Buyer

### Ordering Example:

**OPL-408-DN150-PN40/B1-154,1-70,12-1.4404-1.4404-graphite/316SS-liquid-tube 1/2" to welding**

stands for: The ISA 1932 nozzle with carrier rings, nominal pipe diameter DN150, flange PN40 / facing B1 according to EN 1092-1, internal pipe diameter 154,1 mm, throat diameter 70,12 mm, nozzle material 1.4404 = SS316L, carrier rings material 1.4404 = SS316L, gasket material: graphite/SS316L, fluid state: liquid, pressure connections: tube 1/2" to welding